



HOSHIZAKI

CERTIFICATION



HACCP International



ISO9001

DCM-120LS-HC

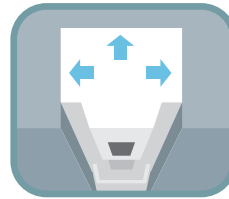
ICE & WATER DISPENSER



Key Features



**Eco- friendly
Refrigerant**



Perfect fit

There are no exhaust outlet on the left and right sides and the back, so it can be placed close to the wall.



Hygienic design

This Lever type of ice dispenser prevents touching the lip of a glass.



Easy for daily cleaning

Draining board can be removed



Easy for maintenance

Notify when parts should be replaced

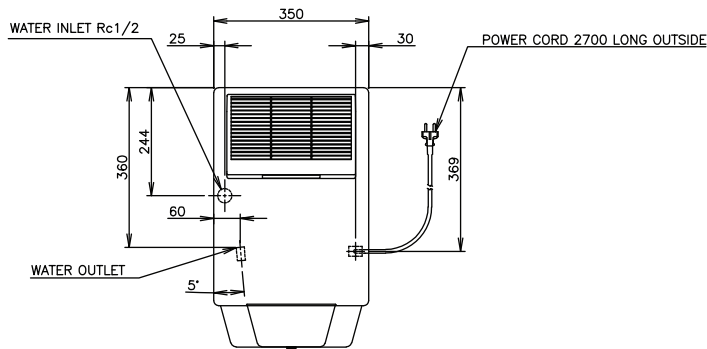
Hoshizaki DCM series are ice/water dispensers producing high-quality servings of cubelet ice and/or water. The three steps of quality ice production, protected ice storage, as well as quick service of ice are all combined in one device – with the help of only one button your refreshment is ready in seconds. With DCM DISPENSERS the user can select from these options:

- Cubelet ice only
- Cubelet ice and water
- Water only



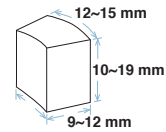
Dimensions & Specifications

TOP

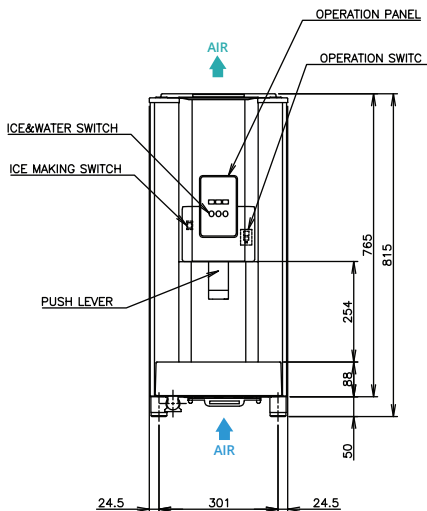


ICE SHAPE

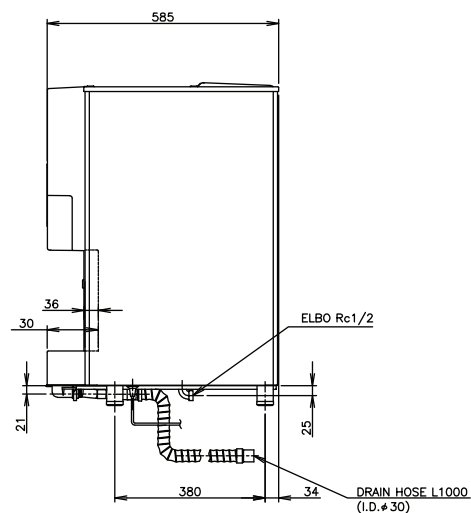
Cubelet
Compressed Flake Ice



FRONT



RIGHT SIDE



MODEL		DCM-120LS-HC
ICE SHAPE		Cubelet (Compressed Flake Ice)
POWER SUPPLY		1 Phase 220-240/220-230V 50Hz Capacity: 0.69kVA (3.0A)
AMPERAGE		2.4A Starting: 9.7A
ELECTRIC CONSUMPTION		391W
HEAT REJECTION		(AT32°C / WT21°C) 760W
ICE PRODUCTION PER 24H	(AT10°C / WT10°C)	Approx. 120kg
	(AT21°C / WT15°C)	Approx. 110kg
	(AT32°C / WT21°C)	Approx. 90kg
ICE DISPENSING RATE (40G / CUP)	(AT10°C / WT10°C)	Approx. 225 cups/h
	(AT21°C / WT15°C)	Approx. 214 cups/h
	(AT32°C / WT21°C)	Approx. 193 cups/h
STORAGE CAPACITY		Approx. 4.0kg
WATER CONSUMPTION PER 24H	(AT32°C / WT21°C)	90 L
REFRIGERANT		R290
OUTSIDE DIMENSIONS		Carton: 350mm (W) x 585mm (D) x 815(~830)mm (H)
PACKAGE		Carton: 400mm (W) x 641mm (D) x 872mm (H)
WEIGHT		44kg (Gross: 48kg)
OPERATING CONDITIONS		Ambient Temp.: 5-40°C, Water Supply Temp.: 5-35°C,
		Water Supply Pressure: 0.05-0.78MPa
		Voltage Range: Rated Voltage ±6%



HOSHIZAKI

HOSHIZAKI (THAILAND) LIMITED

No. 99 CP Tower North Park building 9th Floor, Zone D1, Soi Ngamwongwan 47
Intersection 42, Thung Song Hong, Subdistrict, Lak Si District, Bangkok 10210
TEL +66 2 005 9980 FAX +66 2 516 2646 <https://hoshizaki.co.th/en/>

